



*Welcome to the*  
**Arvena Kongress Hotel**  
*in Bayreuth*



**ARVENA**  
HOTEL IN DER WAGNERSTADT **KONGRESS**

Arvena Kongress • Das Hotel in der Wagnerstadt GmbH & Co. KG  
Eduard-Bayerlein-Strasse 5a • 95445 Bayreuth

Tel.: +49 921 727-0 • Fax: +49 921 727-115 • [info@arvenakongress.de](mailto:info@arvenakongress.de) • [www.arvena.de](http://www.arvena.de)

# *Hotel information*

Our \*\*\*\**Arvena Kongress* hotel is located nearby the historic city center of Bayreuth, which is famous for its culture and the Richard Wagner festival.

There are **196 rooms with air conditioning**.  
396 beds, thereof 2 single rooms, 170 twin-bedded rooms and 24 junior suites.

All rooms are equipped with bathtub or shower, toilet, hairdryer, desk, minibar, room-safe, phone, radio, flatscreen and SKY TV. We offer a limited number of parking spaces and a garage for extra charge. The most of our rooms are non-smoking rooms but we also have smoking rooms available. Wifi is available in the entire hotel.

Enjoy our exquisite cuisine in our **restaurant**, the team will spoil you with international and Franconian delicacies.

Take a tasty drink in our **hotel bar** and recharge your batteries.

Our hotel can also provide you **14 conference and event rooms**.

We have daylight and car accessible rooms.  
They are 77m<sup>2</sup> - 536m<sup>2</sup> for up to 650 persons for your meeting or event with qualified service in a pleasant atmosphere. All our rooms are flexible to meet your individual needs.

Furthermore, our event room with 536m<sup>2</sup> is the biggest in the region.  
The natural lightning through the floor to ceiling windows creating a comfortable working atmosphere. Some of the conference rooms have access to the spacious terrace area.

\*\*\*\*

Our **sauna and fitness area** offers you relaxation and provides you a breathtaking view over the Festspielhaus and the Fichtelgebirge in Bayreuth.

Many free-time activities are easily reachable from here.





# *We are there for you*

## Management

Marc Jungk

☎ +49 (0) 921-727 100  
📠 +49 (0) 921-727 115  
✉ [direktion.jungk@arvenakongress.de](mailto:direktion.jungk@arvenakongress.de)

## Conferences & banqueting

Ivonne Murr

☎ +49 (0) 921-727 250  
📠 +49 (0) 921-727 115  
✉ [tagung@arvenakongress.de](mailto:tagung@arvenakongress.de)

## Reception

Annemarie André Pinto

☎ +49 (0) 921-727 109  
📠 +49 (0) 921-727 115  
✉ [info@arvenakongress.de](mailto:info@arvenakongress.de)

## Reservations

Pia Schwarzmann

☎ +49 (0) 921-727 106  
📠 +49 (0) 921-727 115  
✉ [reservierung@arvenakongress.de](mailto:reservierung@arvenakongress.de)

## Head Chef

Rainer Utz

☎ +49 (0) 921-727 800  
📠 +49 (0) 921-727 115  
✉ [kueche@arvenakongress.de](mailto:kueche@arvenakongress.de)

## Sales and Marketing

Christian Marzi

☎ +49 (0) 911-8922 140  
📠 +49 (0) 911-8922 444  
✉ [c.marzi@arvena.de](mailto:c.marzi@arvena.de)



# *Opening hours*

## **Breakfast**

Monday to Friday 06:30 a.m. to 10:00 a.m.  
Weekends and public holidays 06:30 a.m. to 11:00 a.m.

## **Restaurant (in summer with terrace)**

Monday to Sunday 12:00 noon to 01:30 p.m.  
06:00 p.m. to 09:30 p.m.

At festival time 12:00 noon to 02:00 p.m.  
06:00 p.m. to 00:30 a.m.  
(except at short performances)

Capacity 120 people in the restaurant  
40 people on the terrace

## **Bar**

Monday to Sunday 06:30 a.m. to 00:30 a.m.  
(after consultation also longer)

## **Roomservice**

For drinks according to the opening hours of the bar.  
For food according to the opening hours of breakfast and restaurant.

## **Sauna and fitness area**

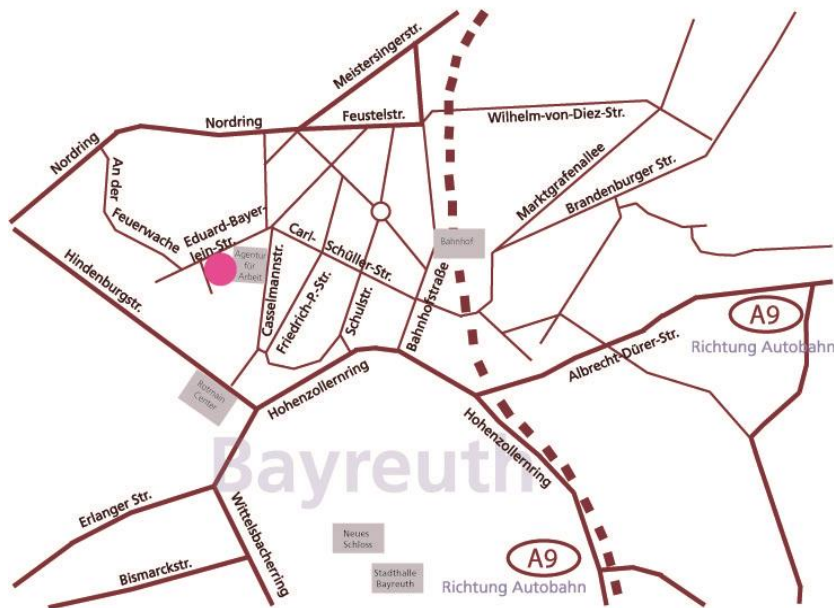
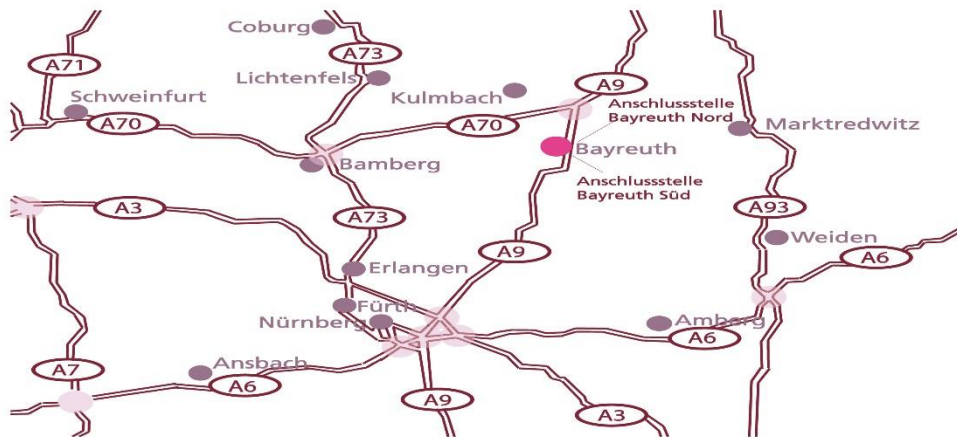
Monday to Sunday 05:00 p.m. to 10:00 p.m. (sauna + steam bath)  
10:00 a.m. to 10:00 p.m. (fitness)



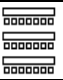




# How to find us

The easiest way to reach us by car is via the A9 exit “Bayreuth Süd”. Drive towards the city center and follow the hotel signs to the Arvena Kongress hotel or “Bundesagentur für Arbeit”.

At [www.arvena.de](http://www.arvena.de) you can calculate your route.  
Choose your desired hotel and click on the address mentioned above

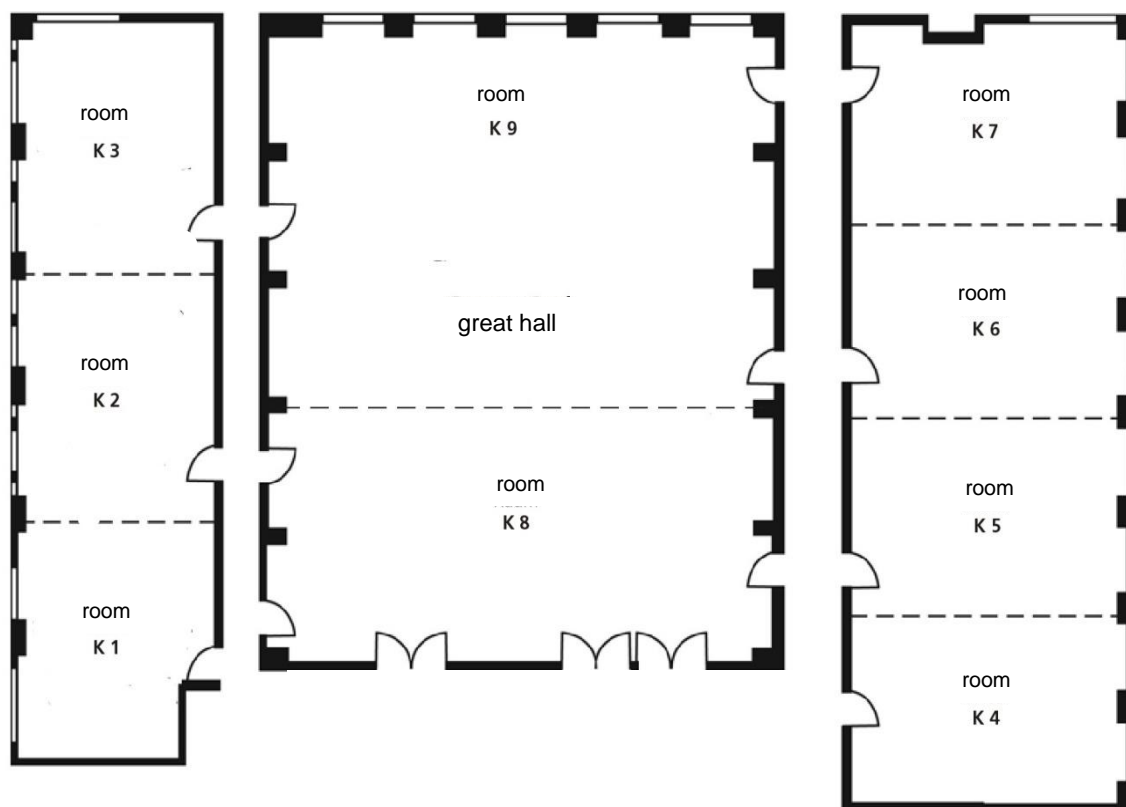


## *Room capacity*

				classroom	u-shape	cinema	block	banquet
space	width	length	height					
<b>K 1</b> 77m <sup>2</sup>	8.20m	9.34m	3.40m	40	19	50	24	-
<b>K 2</b> 80m <sup>2</sup>	8.20m	9.84m	3.40m	40	21	50	28	-
<b>K 3</b> 81m <sup>2</sup>	8.20m	9.94m	3.40m	40	21	50	28	-
<b>K 4</b> 85m <sup>2</sup>	11.45m	7.39m	3.40m	50	26	70	30	-
<b>K 5</b> 90m <sup>2</sup>	11.45m	7.84m	3.40m	50	28	70	32	-
<b>K 6</b> 90m <sup>2</sup>	11.45m	7.94m	3.40m	50	28	70	32	-
<b>K 7</b> 90m <sup>2</sup>	11.45m	7.94m	3.40m	50	28	70	32	-
<b>K 8</b> 218m <sup>2</sup>	20.54m	10.44m	3.55m	140	60	200	70	120
<b>K 9</b> 315m <sup>2</sup>	20.54m	15.50m	3.55m	200	80	350	80	180
<b>Saal</b> 536m <sup>2</sup>	20.60m	26.00m	3.55m	350	-	650	-	400
<b>K 1 + 2</b> 157m <sup>2</sup>	8.20m	19.18m	3.40m	100	48	120	50	-
<b>K 2 + 3</b> 161m <sup>2</sup>	8.20m	19.78m	3.40m	100	48	120	45	-
<b>K 1 bis 3</b> 238m <sup>2</sup>	8.20m	29.12m	3.40m	150	70	200	-	-
<b>K 4 + 5</b> 175m <sup>2</sup>	11.45m	15.23m	3.40m	100	50	150	-	100
<b>K 5 + 6</b> 180m <sup>2</sup>	11.45m	15.78m	3.40m	100	50	150	-	100
<b>K 4 bis 6</b> 265m <sup>2</sup>	11.45m	23.17m	3.40m	170	80	220	-	140
<b>K 4 bis 7</b> 355m <sup>2</sup>	11.45m	31.11m	3.40m	210	-	300	-	200

**All functional rooms are equipped with an air conditioning and have natural lighting.  
Only our event room K 8 has no natural lighting.**

## *Room capacity*



## *Conference rooms*

We can focus exactly on your wishes through various combinations of our event rooms.  
Our rooms are accessible with car.

A successful event is guaranteed through modern technique and professional service.

## *Deployment costs*

<u>Room</u>	<u>Deployment costs per day</u>
K 1 (77m <sup>2</sup> )	320.00 EUR
K 2 (80m <sup>2</sup> )	332.00 EUR
K 3 (81m <sup>2</sup> )	336.00 EUR
K 4 (85m <sup>2</sup> )	353.00 EUR
K 5 (90m <sup>2</sup> )	374.00 EUR
K 6 (90m <sup>2</sup> )	374.00 EUR
K 7 (90m <sup>2</sup> )	374.00 EUR
K 8 (218m <sup>2</sup> )	905.00 EUR
K 9 (315m <sup>2</sup> )	1,305.00 EUR
K 1 + 2 (157m <sup>2</sup> )	652.00 EUR
K 2 + 3 (161m <sup>2</sup> )	668.00 EUR
K 1 – 3 (238m <sup>2</sup> )	988.00 EUR
K 4 + 5 (175m <sup>2</sup> )	726.00 EUR
K 4 – 6 (265m <sup>2</sup> )	1,100.00 EUR
K 5 + 6 (180m <sup>2</sup> )	747.00 EUR
K 4 – 7 (355m <sup>2</sup> )	1,474.00 EUR
Saal (535m <sup>2</sup> )	2,220.00 EUR
GAR 317 (25m <sup>2</sup> )	100.00 EUR
GAR 417 (25m <sup>2</sup> )	100.00 EUR
GAR 517 (25m <sup>2</sup> )	100.00 EUR
GAR 200 (40m <sup>2</sup> )	150.00 EUR

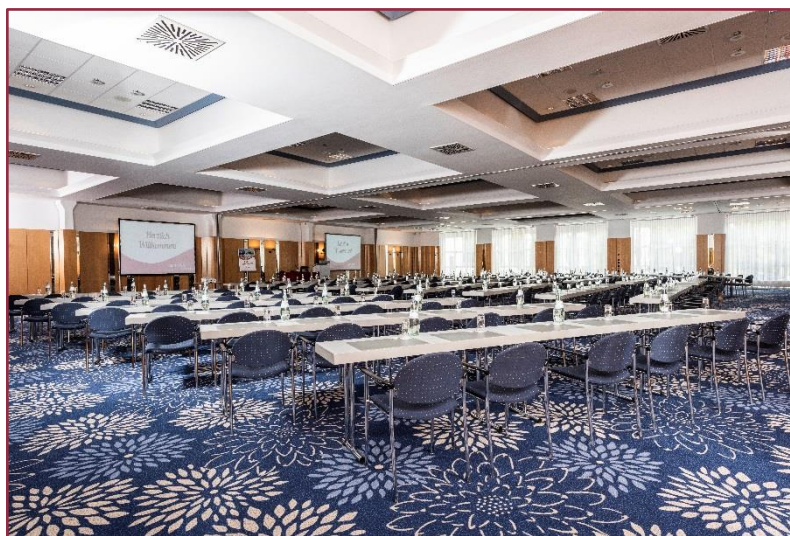
- The deployment costs contain the standard equipment (pin-board, screen and flipchart).
- The deployment costs will be dropped, if you choose one of our conference packages. Our conference packages are bookable from 15 participants.
- **We reduce 20% of the realized food and beverages from the room rent** (except group rooms, because of fixed prices). For example, if you book a room with 77m<sup>2</sup> and have food and beverages sales of 1,000.00 EUR you get 20% – that means 200.00 EUR – deduction from the room rent. So, there are 120.00 EUR rent left.
- We invoice 8.00 EUR per m<sup>2</sup> at **exhibitions, advertising and sale events** without deduction. Alternatively we charge 30.00 EUR per exhibitors and day, incl. table, 2 chairs and power connection.



## *Conference equipment*

<b>CD-/DVD-Player</b> per day	20.00 EUR
<b>Flatscreen</b> 102cm HDMI	30.00 EUR
<b>Flipchart</b> per day incl. 1 block á 10 papers	8.00 EUR
another block á 10 papers	5.00 EUR
<b>Garbage disposal</b>	at cost
<b>Laserpointer</b> deposit per event	on demand
<b>Laundry rental</b> tablelinen etc.	at cost
<b>Microphone system</b> with mixer per event	100.00 EUR
<b>Photocopy</b> black/white	0.30 EUR
<b>Photocopy</b> coloured	0.50 EUR
<b>Pin-board</b> per day incl. 2 sheets of paper	6.00 EUR
Additional sheets of paper	1.50 EUR
<b>Pin-on, headset, wireless microphone</b> per day	35.00 EUR
<b>Presentation kit</b> once per event	25.00 EUR
<b>Presenter</b>	10.00 EUR
<b>Service staff</b> per hour excluded hotel services	45.00 EUR
<b>Slideprojector</b>	on demand
<b>Standing microphone</b> wireless, per day	35.00 EUR
<b>Tablemicrophone</b> with cable, per day	35.00 EUR
<b>Technician</b> active caring, per hour	45.00 EUR
<b>Video projector</b> adjusted brightly, depending on the roomsize 2.000 to 4.500 ANSI-Lumen	50.00 EUR

We can provide any kind of technic and equipment on demand through a partner company.



# *Conference package*

*(valid from 15 participants)*

- 1. Conference package without conference drinks *Basic*** **38.50 EUR**
  - Conference room, according to number of participants
  - Use of standard equipment (screen, 1 pin-board and 1 flipchart)
  - 2 coffee breaks with coffee, tea and pastry or cake
  - Lunch: 3-course-meal or chef choice buffet lunch
  - Mineral water for lunch on the table
  
- 2. Conference package with conference beverages *Standard*** **49.00 EUR**
  - Conference room, according to number of participants
  - Use of standard equipment (screen, 1 pin-board and 1 flipchart)
  - 2 coffee breaks with coffee, tea and pastry or cake
  - Lunch: 3-course-meal or chef choice buffet lunch
  - Mineral water for lunch on the table
  - Chilled conference drinks as required inside of the room
  
- 3. Conference package with conference beverages and dinner** **72.00 EUR**
  - Conference room, according to number of participants
  - Use of standard equipment (screen, 1 pin-board and 1 flipchart)
  - 2 coffee breaks with coffee, tea and pastry or cake
  - Lunch: 3-course-meal or chef choice buffet lunch
  - Mineral water for lunch on the table
  - Chilled conference drinks as required inside of the room
  - Dinner: 3-course-meal or chef choice buffet dinner
  - Mineral water for dinner on the table
  
- 4. Half board package with conference drinks** **124.00 EUR**
  - Overnight stay in a comfortable single rooms incl. business-package
  - Conference room, according to number of participants
  - Use of standard equipment (screen, 1 pin-board and 1 flipchart)
  - 2 coffee breaks with coffee, tea and pastry or cake
  - Lunch or dinner: 3-course-meal or chef choice buffet lunch/dinner
  - Chilled conference drinks as required inside of the room
  
- 5. Full board package with conference drinks** **147.00 EUR**
  - Overnight stay in a comfortable single room incl. business-package
  - Conference room, according to number of participants
  - Use of standard equipment (screen, 1 pin-board and 1 flipchart)
  - 2 coffee breaks with coffee, tea and pastry or cake
  - Lunch: 3-course-meal or chef choice buffet lunch
  - Dinner: 3-course-meal or chef choice buffet dinner
  - Mineral water for lunch and dinner on the table
  - Chilled conference drinks as required inside of the room

Conference packages are available from 15 participants.

Under 15 participants we charge additionally to the conference package an extra room rent.

## *Individual prices*

We design our prices transparent!

Therefore you can specify your choice of our individual services, additional to our room rent, on your own.

### **Conference drinks**

• Orange juice	0.2 l	2.80 EUR
• Apple juice	0.2 l	2.80 EUR
• Coca Cola	0.2 l	2.50 EUR
• Fanta	0.2 l	2.50 EUR
• Gerolsteiner Mineral water	0.5 l	2.50 EUR
• Gerolsteiner Mineral water	0.7 l	6.00 EUR
• Orange juice	1.0 l	9.00 EUR
• Apple juice	1.0 l	9.00 EUR

### **Conference drinks – flat rate per person 10.50 EUR**

We provide a wide selection of beverages for your conference participants.

The conference drinks will be refreshed during the lunchbreak.

### **Coffee break**

• 1 coffee break, tea, pastry or cake, yoghurt or fruits	6.00 EUR
• 2 coffee breaks, tea, pastry or cake, yoghurt or fruits	11.00 EUR
• Liter coffee/tea incl. biscuits	13.00 EUR

### **Break catering**

• Miniplunder	per item	1.50 EUR
• Pretzel	per item	2.00 EUR
• Cake	per item	2.50 EUR
• Butter pretzel	per item	2.50 EUR
• ½ sandwich (sausage & cheese)	per item	3.00 EUR
• Natural yoghurt with fruit salad	per person	3.50 EUR
• Swiss bircher cereals	per person	4.00 EUR
• Vegetable sticks with dip	per person	6.50 EUR
• Seasonal fruit basket	per basket	25.00 EUR

### **Lunch and dinner – flat rate per person 23.00 EUR**

3-course-menu or lunch / dinner buffet by chef's choice  
incl. Mineral water for lunch or dinner.

### **Menu and Buffet recommendations**

All menu and buffet recommendations are chosen by our chef. Pulldown menus are sent separately and are specified on your request.

# *Room prices*

## **Regular price**

(year-round valid, except at festival time)

Single room including business-package	120.00 EUR
Twin bedded room including business-package	170.00 EUR
Suite for 1 person including business-package	170.00 EUR
Suite for 2 persons including business-package	220.00 EUR

## **Regular price with event at hotel**

(year-round valid, except at festival time)

Single room including business-package	85.00 EUR
Twin bedded room including business-package	115.00 EUR
Suite for 1 person including business-package	135.00 EUR
Suite for 2 persons including business-package	175.00 EUR

## **Weekend prices**

(Friday - Sunday)

Single room including business-package	90.00 EUR
Twin bedded room including business-package	120.00 EUR
Suite for 1 person including business-package	135.00 EUR
Suite for 2 persons including business-package	175.00 EUR

Our business package includes our plentiful breakfast buffet, Wifi, onsite parking upon availability and the use of our sauna area.

## **Other charges**

Garage per night	8.00 EUR	daily fee	4.00 EUR
1 pet (dog or cat)	12.00 EUR		
Extra bed	40.00 EUR		





*And last but not least we wish you a safe  
journey home and best wishes  
for your travel!*

### **Lunchpackage**

- 1 sandwich with cheese
- Panfried escalope "Vienna Style"  
with bread and butter
  - 1 refreshing drink
    - 1 cereal bar
    - 2 piece of fruit
    - Mini-pastry
    - Napkin

**per package    13.50 EUR**

**We consider your change request.**



# *Delivery*

## **Material delivery**

We will gladly take your documents and/or display items some days before your event. Please note the following aspects in the delivery:

- Event- and company name
- Date of the event
- Name of the person who is allowed to get the documents

All our conference rooms are located at the ground floor and are barrier-free accessible. Breakout rooms on the upper floor are also accessible through our elevators. Our conference rooms are partly accessible through car. The door is 3 meters wide.

### **Freight elevator when delivered**

height	2.20 meters
width of door	0.90 meters
width inside	1.10 meters
depth	2.10 meters
load	1000kg or 13 persons

### **Guest elevator in Foyer right**

height	2.20 meters
width of door	0.90 meters
width inside	1.10 meters
depth	2.10 meters
load	1000kg or 13 persons

### **Guest elevator in Foyer left**

height	2.20 meters
width of door	0.90 meters
width inside	1.10 meters
depth	2.10 meters
load	1000kg or 13 persons